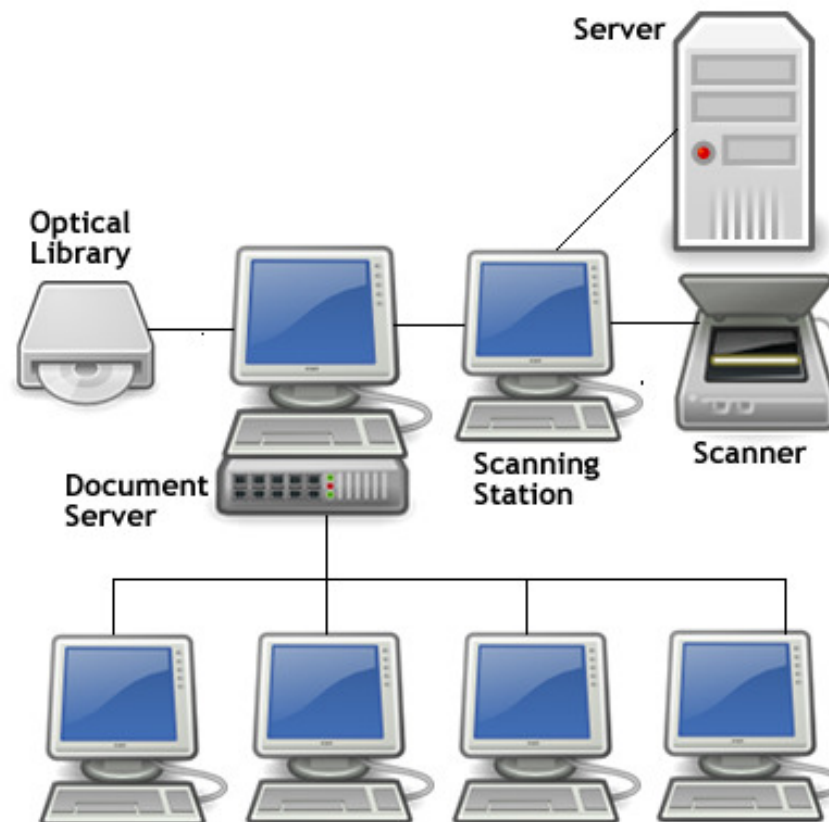


Custodian Scanning & Retrieval System

Streamline document storage, archiving and retrieval with Custodian, the easy to use document imaging system

- * Provides electronic management of storage and distribution of documents and images throughout your internal network
- * Enables stored information to be accessed for viewing, printing, faxing or emailing, across different sites
- * Providing time-saving and security benefits for any combination of host environments
- * Fast and secure archive of every document produced in the organisation
- * For more information, call 0844 225 0482 or visit www.nextsolution.co.uk

Successful companies already using Custodian include:



- Other systems may charge for annual license usage AND annual support. With Custodian, only the standard annual support contract applies, **saving you up to 40%**
- Prevents data from being 'lost' and reduces wasted labour time searching for paper documents or images from your storage departments and files
- Improves paper handling efficiency and reduces labour costs.
- Compatible with most networks and scanners

To arrange a free consultation on Custodian, please call 0844 225 0482 or e-mail sales@nextsolution.co.uk.

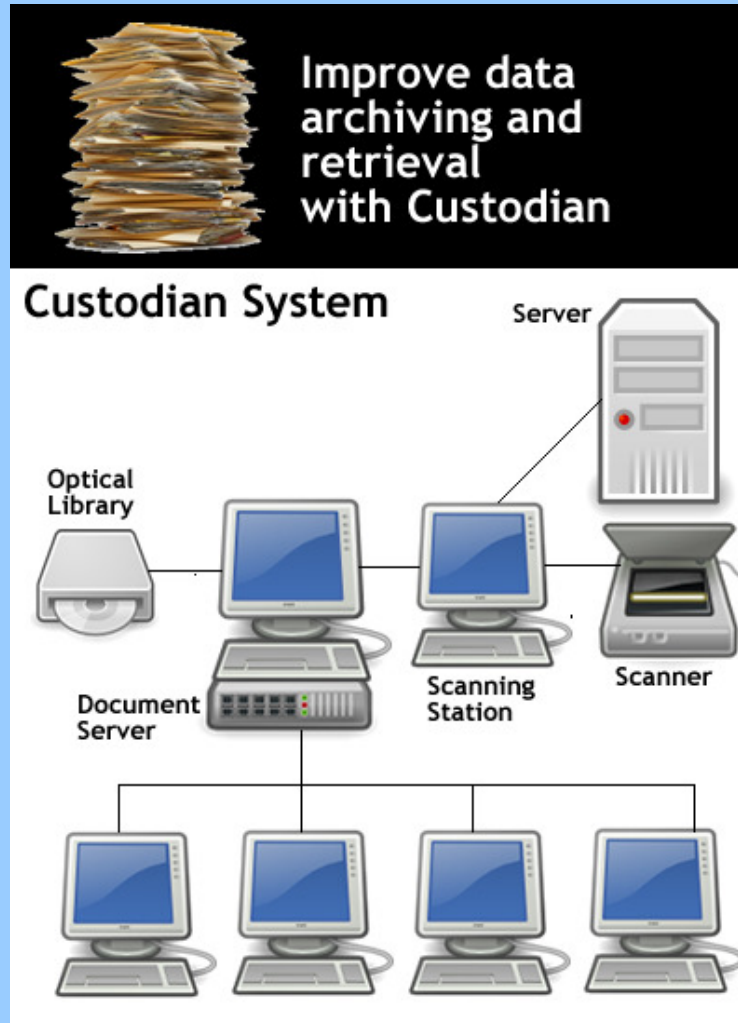


Capturing the document and converting it into a digitised electronic image

- Batch scanning enables the scanning and storage of a large number of documents

- Documents can be randomly scanned and then indexed at a later stage
- Re-scan from any point in the batch
- Interfaces with any SQL compliant database
- It provides necessary information for automatic indexing
- Documents are stored in a tiff format
- Allows for the integration of hardcopy documents into document workflow

Custodian Process & System



Long term storage and management facility

- By scanning, capturing and storing documents in secure digital archives, Custodian document management software makes physical storage space unnecessary and frees up computer disk space
- It provides inexpensive and easy access to great volumes of information
- Allows for the storage of documents in a network directory making these accessible to multiple users and applications concurrently



Custodian COLD produces output without having to scan in a document first

- Custodian reads data from files received electronically from the host system.

- These documents can then be merged with scanned background templates containing customer specific stationery
- Templates containing customer specific stationery are stored only once saving disk space
- Index information is automatically read from documents during the COLD import process
- Computer output is downloaded using standard file transfer protocols (FTP)
- Documents can be routed to designated print, fax or e-mail servers
- Zeta Fax and Right Fax servers are supported



File and retrieve stored documents for easy reference

- Batch indexing is supported

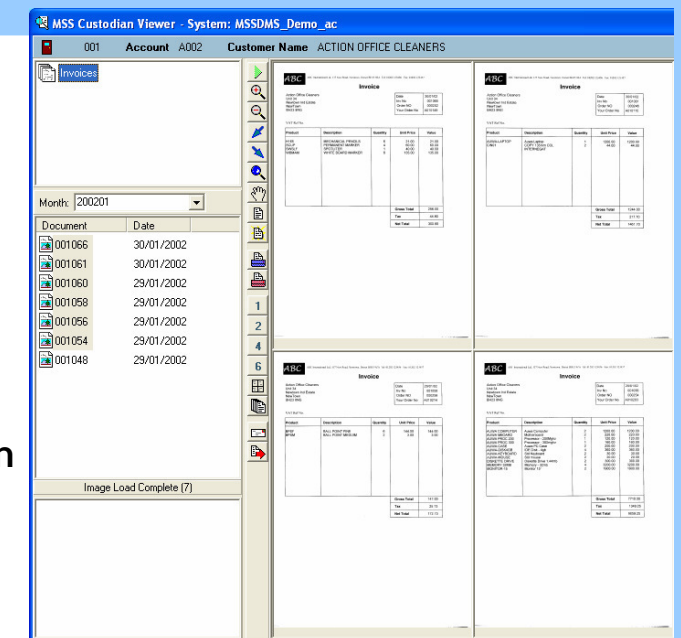
- OCR, OMS and Barcode recognition ensures that clerical work is reduced to a minimum whilst accuracy is maximised
- Custodian reads data from files received from an AS/400 or other host system. The data received from the host is processed and made available for storage, retrieval, display, printing or faxing
- Grouping of documents in user defined groups
- Indexes are held in an SQL compliant database



Image-manipulation features

include zooming, rotation and viewing of annotations

- Ability to process, search, retrieve and view a document, regardless of how and where it was created
- The viewer allows the end user to query on specific indexes



“With proven installations in the NHS arena, Custodian has produced excellent scanning & retrieval solutions, especially in busy Accident & Emergency Departments, where details of Patients’ medical treatments must be kept on file and stored efficiently for future reference.”