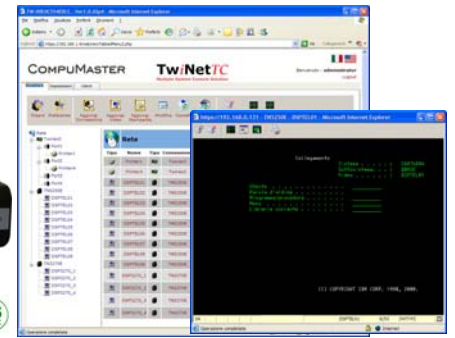


Device to remotely control the iSeries AS/400 System Twinax console via SSL TCP/IP.

TwNetTC provides secure remote access to an IBM AS/400, S/36 Twinax console over TCP/IP.



TwNetTC represents the next generation of the CompuMaster TwiNet product.

TwNetTC is an highly reliable embedded device that provides access to IBM iSeries AS/400, S/36, or Advanced S/36 Twinax devices over a TCP/IP network.

The TwiNetTC application:

- ◆ **TCP/IP access to system consoles including LPAR (Logical PARTitioning) configured systems requiring multiple consoles.**

The system console is typically a Twinax terminal connected to port 0, address 0 and is the only terminal from which it is possible to perform certain system administration activities.

TwNetTC allows use of the system console **from any remote PC connected via LAN, WAN, VPN with SSL and HTTPS security.** The TwiNetTC4 model handles up to 4 consoles simultaneously.

- ◆ **Access to video and printer sessions from any PC connected on the network to IBM AS/400, S/36, or Advanced S/36 Twinax control units (52xx, 53xx, 54xx).**

Existing IBM systems with only Twinax support are limited in that the Twinax devices traditionally are not accessible over an existing TCP/IP network infrastructure.

TwNetTC allows integration of legacy systems on TCP/IP networks by making these devices accessible to PCs the network. Display and printer sessions can now be easily accessed over the TCP/IP network.. With the TwiNetTC4 up to 28 Twinax devices can be accessed.

- ◆ **Browser or local client access**

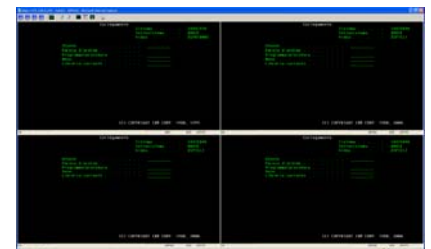
With TwiNetTC display emulation sessions can be accessed either via a browser using an ActiveX control, or via a dedicated client application installed on a PC. With either method the session is secure via SSH/HTTPS..

- ◆ **Secure Web access to AS/400 applications**

Because TwiNetTC uses SSL/HTTPS, it is possible to access AS/400 display sessions remotely without a security risk.

- ◆ **MDI Display Sessions**

With TwiNetTC it is possible to display multiple display sessions in a single window as shown to the right.

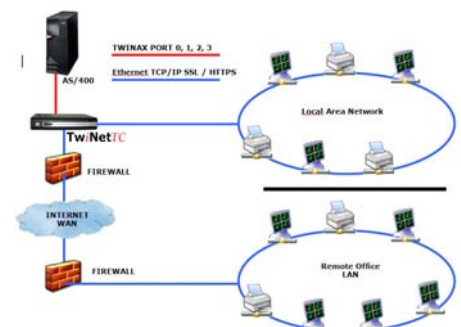


- ◆ **Session keep alive**

TwNetTC keeps the Twinax connection active even if there is an interruption in the TCP/IP network traffic to the TwiNetTC. This assures that when a display session is reconnected, the session is exactly as it was when the disconnect occurred.

Example of a typical application as an SNA Gateway.

The IBM system can be an S/3x or AS/400 with a Twinax controller. TwiNetTC can be installed either close to the AS/400 system or close to the client using existing Twinax cabling.



TECHNICAL SPECIFICATION	TwinetTC	TwinetTC4	TwinetTC100
Processor	VIA C7 LP V4 - 1.3GHz	VIA C7 LP V4 - 1.3GHz	VIA C7 LP V4 - 1.3GHz
Operating System	Windows XP Embedded	Windows XP Embedded	Windows XP Embedded
RAM Memory	256MB	256MB	512MB
Flash Memory	512MB	512MB	512MB
External Power Supply 100/240VAC 50/60Hz, 12V 4A DC	•	•	•
Dimensions H x W x D	292 x 53 x 237 mm	292 x 53 x 237 mm	292 x 53 x 237 mm
CE, FCC Class B, GS TUV, UL Certifications	•	•	•
Temperature Range (Working Operations)	0° ÷ 40°	0° ÷ 40°	0° ÷ 40°
Humidity	0% ÷ 90%	0% ÷ 90%	0% ÷ 90%
Peripheral			
Twinax Interface remote unit	1 port (7 addresses)	4 ports (7 x 4 addresses)	-
Connection Twinax Cable	DB15 Female – T Twinax	DB15 Male – 4 Twinax	-
Ethernet RJ45	10/100BaseT	10/100BaseT	10/100BaseT
Monitor DB15 VGA/SVGA	◇	◇	◇
Monitor DVI	◇	◇	◇
Mouse and Keyboard PS/2	◇	◇	◇
2 x RS-232 ports	◇	◇	◇
4 x USB 2.0 ports	◇	◇	◇
Slot PC Card (Cardbus)	◇	◇	◇
Audio In MIC (1 x 1/8 inch jack)	◇	◇	◇
Audio Out Headphones (1 x 1/8 inch jack)	◇	◇	◇
DB25 parallel ports	◇	◇	◇
◇ Not needed peripheral, available for diagnostic mode only.			
Client Systems supported			
Client PC	Windows 98/XP, 2000/2003	Windows 98/XP, 2000/2003	Windows 98/XP, 2000/2003
Thin Client CompuMaster	XP series	XP series	XP series
Browser	IE 6.0	IE 6.0	IE 6.0
Host Systems supported			
AS/400 iSeries	from V3R2 to V5R3	from V3R2 to V5R3	from V3R7 to V5R3
Advanced Series/S36	All models	All models	-
System/36	All models	All models	-
Remote control units	52xx, 53xx, 54xx	52xx, 53xx, 54xx	-
Protocols and clients			
SNA 5250	•	•	-
TN5250E / TN3270E	8 sessions	32 sessions	100 sessions
5250 ActiveX (SSL) emulator	Video	Video	Video
Twinet Gold (SSL) client emulator	Video and printer	Video and printer	-
HTTP(S)	•	•	•
SSH (remote access)	•	•	•
Twinet Gold emulator specifications			
Supported operating systems	95/98/NT/ME/XP/2000/2003		-
Supported video emulations	IBM 5251, 5291, 3196, 3180-2, 3477-FG, 3477-FC, 3278-x		-
Supported printer emulations	IBM 5256, 5224, 5225, 4214, 4234, 5219-D, 3812, 3287		-
Euro symbol support	•		-
Macro, hotspot, programmable keyboard	•		-
Editing keyboard profile and video attributes	•		-
Cursor shape and selectable/modifiable fonts	•		-
Cut and Paste function Record/Playback	•		-
C.O.R. support, quality override, Hex Pass Through	•		-
GDI printer Driver and text mode	•		-
CPI, LPI, quality LQ and NLQ override support	•		-
Administration			
Via HTTPS browser	•	•	•
Compumaster Network Manager support	•	•	•
Remote update via Browser	•	•	•
Warranty			
1 year ex-factory. Free period extension of 2 year upon product registration on CompuMaster web site			

Description	Code	COMPUMASTER S.R.L.
TwinetTC SNA Gateway 1 port TW 7 addresses	60AC00002	Via Zambra, 4 38100 Trento -Italy
TwinetTC4 SNA Gateway 4 ports TW 28 addresses	60AC00003	Tel: 0461 420517
TwinetTC100 SNA Gateway 100 TN5250 session	60AC00004	Web: www.compumaster.it e-mail: info@compumaster.it

